

YEAR 2006

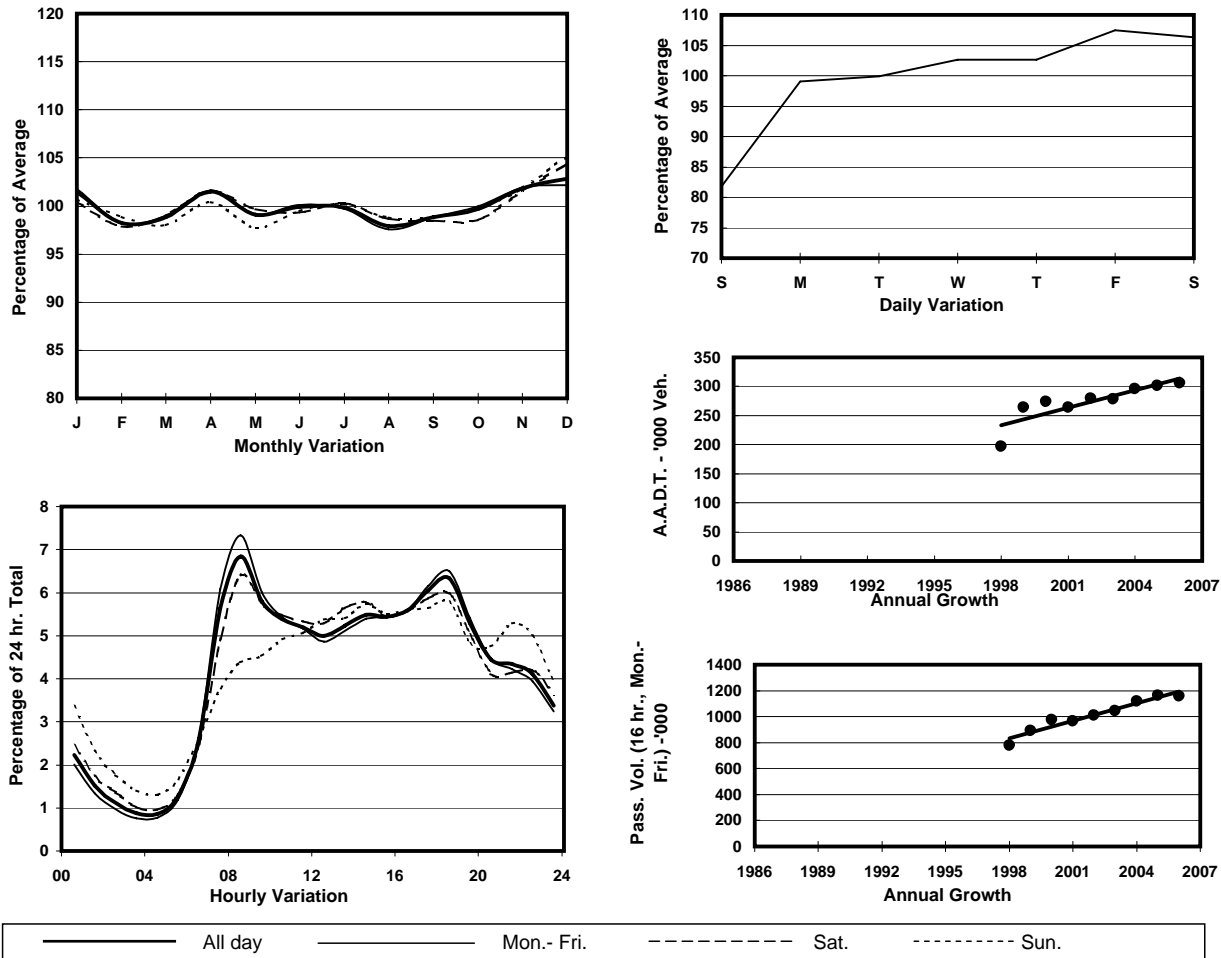
Location

Tsing Yi External Cordon(Tsing Yi Area Boundary)

Stations on Cordon/Screenline

5018, 5027, 5033, 5034, 6219 and 6221

1. TRAFFIC FLOW VARIATION AND GROWTH



2. TRAFFIC CHARACTERISTICS (BY DIRECTION)

Parameter	All - Day	Mon. - Fri.	Sat.	Sun.
IN BOUND				
A.A.D.T.	152030	157120	163600	126230
R 12 / 24 - %	69.8	70.9	69	63.6
R 16 / 24 - %	86.5	87.4	85.6	82.6
AM Peak Hour	0800-0900	0800-0900	0800-0900	0800-0900
One-way flow at AM peak hour	11190	12320	11740	5850
T - % (AM)	-	31.5	-	-
PM Peak Hour	1800-1900	1800-1900	1700-1800	1600-1700
One-way flow at PM peak hour	9680	10270	9600	7550
T - % (PM)	-	23.5	-	-
Prop.of commercial vehicles - 16 hr.	-	30.3	-	-
OUT BOUND				
A.A.D.T.	153550	158890	164840	126870
R 12 / 24 - %	66.2	67.2	66	60
R 16 / 24 - %	85.8	86.8	84.4	80.7
AM Peak Hour	0800-0900	0800-0900	0800-0900	0900-1000
One-way flow at AM peak hour	9710	10830	9310	5680
T - % (AM)	-	25.3	-	-
PM Peak Hour	1800-1900	1800-1900	1800-1900	1800-1900
One-way flow at PM peak hour	9700	10280	10090	7100
T - % (PM)	-	23.9	-	-
Prop.of commercial vehicles - 16 hr.	-	28.5	-	-

3. OTHER INFORMATION AND COMMENT

4. Vehicle classification and occupancy - Monday to Friday

Time		Class of vehicle									
		Motor	Private	Taxi	Private	PLB	Goods veh.		Non	Fr. Bus	
		Cycle	Car		LB		Light	M & H	Fr. Bus	SD	DD
0700-0800	Pro	2.4	29.4	18.8	0.7	2.5	17.5	15.4	7.4	0.1	5.7
	Ocp	1.1	1.5	2.0	5.2	11.2	1.6	1.1	21.6	18.1	51.8
0800-0900 Peak Hour	Pro	2.6	39.0	13.3	0.6	1.8	14.8	16.1	6.9	0.1	4.7
	Ocp	1.1	1.4	2.0	3.5	12.1	1.6	1.2	26.8	16.9	60.2
0900-1000	Pro	1.6	35.0	11.8	0.8	1.4	20.2	20.2	3.6	0.1	5.3
	Ocp	1.0	1.5	1.9	3.6	11.5	1.6	1.2	12.8	12.6	31.8
1000-1100	Pro	1.3	27.4	11.0	1.1	1.6	25.0	23.8	3.6	0.1	5.1
	Ocp	1.0	1.5	1.9	2.6	9.4	1.5	1.2	10.8	9.9	24.1
1100-1200	Pro	1.3	27.0	10.5	0.9	1.6	24.3	25.7	3.8	0.1	4.9
	Ocp	1.1	1.6	1.9	2.2	8.3	1.5	1.2	11.1	11.8	21.8
1200-1300	Pro	1.0	26.0	12.7	1.0	1.9	23.7	23.8	4.8	0.1	5.0
	Ocp	1.1	1.7	1.9	4.1	9.4	1.6	1.2	10.2	12.0	22.4
1300-1400	Pro	1.3	27.6	11.6	0.8	1.9	23.3	24.6	4.0	0.1	4.9
	Ocp	1.1	1.7	2.1	2.5	9.2	1.5	1.2	13.5	13.0	24.0
1400-1500	Pro	1.0	29.4	10.0	1.0	1.7	24.6	23.7	3.9	0.1	4.6
	Ocp	1.0	1.7	2.0	2.1	9.2	1.6	1.2	12.7	8.4	24.0
1500-1600	Pro	1.3	29.9	9.4	1.3	1.5	25.2	22.8	3.9	0.1	4.6
	Ocp	1.1	1.6	2.0	3.8	11.2	1.6	1.2	14.2	8.1	24.5
1600-1700	Pro	1.1	28.2	10.0	1.0	1.7	23.8	22.9	6.2	0.1	5.0
	Ocp	1.0	1.7	1.8	3.6	12.5	1.6	1.2	10.8	5.7	30.0
1700-1800	Pro	2.0	31.3	11.0	1.2	1.6	23.0	19.2	5.7	0.1	4.9
	Ocp	1.1	1.5	2.0	3.7	13.5	1.6	1.2	14.3	8.1	38.7
1800-1900	Pro	2.9	44.2	11.2	0.5	1.7	15.7	13.2	5.5	0.1	4.9
	Ocp	1.1	1.5	2.1	3.3	14.0	1.5	1.1	22.2	10.1	51.6
1900-2000	Pro	1.5	47.5	10.2	0.5	2.4	14.2	12.1	6.0	0.1	5.5
	Ocp	1.1	1.5	2.1	1.7	11.6	1.5	1.1	18.1	12.4	44.1
2000-2100	Pro	2.2	40.6	15.9	0.3	2.2	13.2	14.0	5.2	0.1	6.3
	Ocp	1.2	1.4	2.2	1.6	11.2	1.5	1.1	16.4	9.5	31.7
2100-2200	Pro	1.8	43.9	19.2	0.4	2.4	10.2	12.1	4.1	0.1	6.0
	Ocp	1.2	1.6	2.1	1.7	10.6	1.6	1.1	16.1	8.8	29.5
2200-2300	Pro	1.8	47.1	20.6	0.4	2.4	8.3	9.6	3.7	0.1	5.9
	Ocp	1.2	1.6	2.1	2.1	8.8	1.5	1.1	12.5	8.3	31.4
16 hours	Pro	1.7	34.4	12.7	0.8	1.9	19.4	18.8	5.0	0.1	5.2
	Ocp	1.1	1.5	2.0	3.2	11.0	1.6	1.2	16.6	11.3	35.1

Legend

- Pro.** Proportion of vehicles in % (Sum may not add up to 100% due to figure rounding)
- Ocp.** Average occupancy of vehicles
- M & H** Medium and Heavy